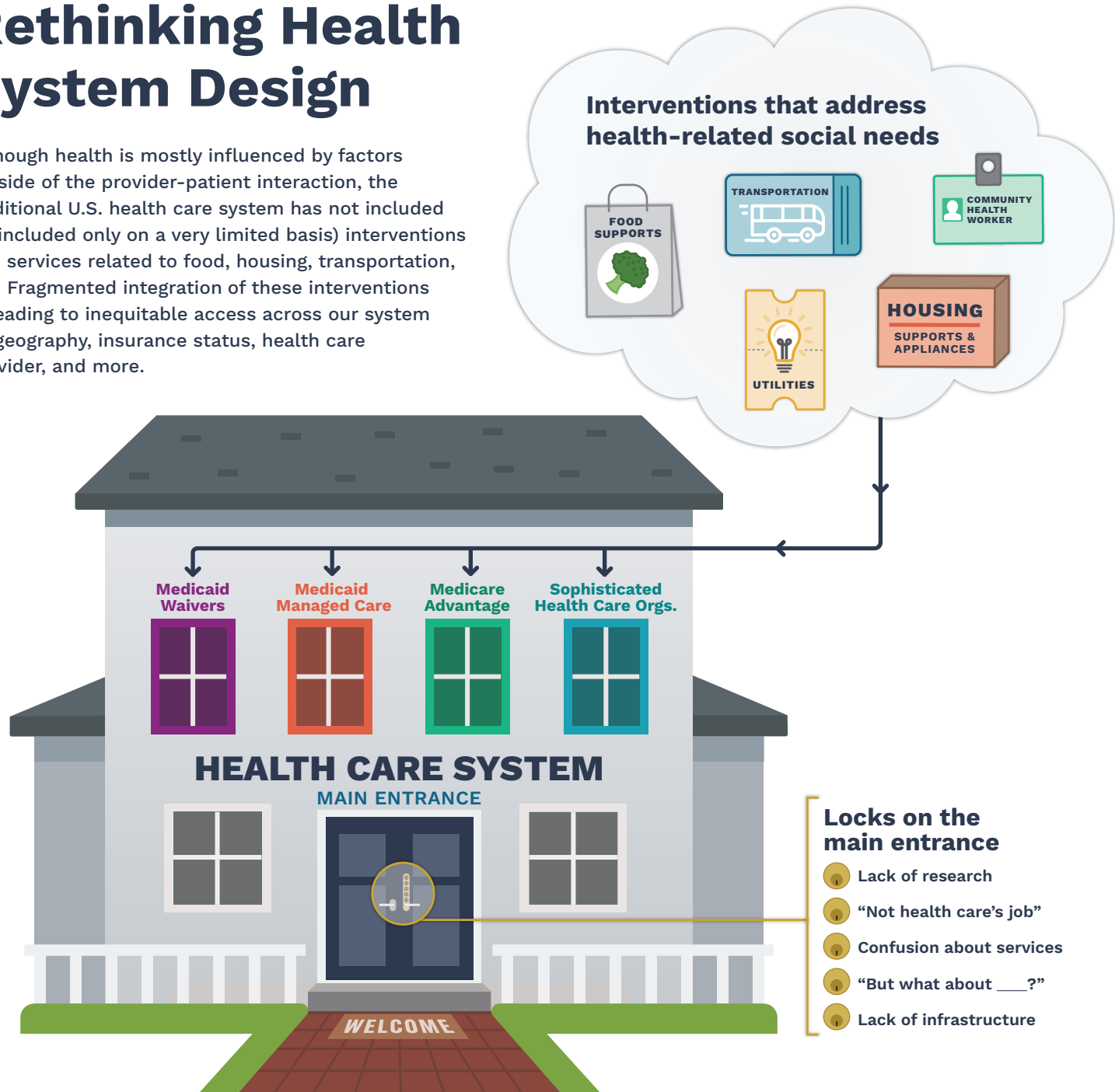


Rethinking Health System Design

Although health is mostly influenced by factors outside of the provider-patient interaction, the traditional U.S. health care system has not included (or included only on a very limited basis) interventions and services related to food, housing, transportation, etc. Fragmented integration of these interventions is leading to inequitable access across our system by geography, insurance status, health care provider, and more.



Medicaid Waivers

- 1115 waiver
- 1915(c)
- 1915(i)
- Relies on state action

Flexibilities in Medicaid Managed Care

- In lieu of services
- Value-added services
- Quality improvement activities
- At the plan's discretion

Medicare Advantage

- General supplemental benefits
- Value-Based Insurance Design (VBID)
- Special Supplemental Benefits for the Chronically Ill (SSBCI)
- At the plan's discretion

Sophisticated Health Care Orgs.

- Community-clinical partnerships
- Anchor institution investment
- Co-location of services (food pharmacies, medical-legal partnerships, etc.)

